



BioBlitz

It was fantastic to see so many people attend the various wildlife surveys that made up the BioBlitz.

On the Friday night we had a Bat Hunt. The bats could be seen clearly silhouetted against the sky. Common Pipistrelle, Soprano Pipistrelle and Noctule Bats were identified.

On the Saturday we started with a dawn bird walk, where 23 varieties of birds were identified including Common Woodpeckers, Chiff Chaffs and Nuthatches. In the

Reptile Survey we found several common lizards, and near a patch of Bog Asphodel, which was in flower, a Raft Spider carrying an egg sack in the larger heath land.

We found 7 varieties of moth. In the later bird walk we saw lots of butterflies, including the Silver-washed fritillary, Green Veined White and Meadow Brown. Also Alder buckthorn which is the sole food plant of the Brimstone butterfly. Also a Chiff Chaff carrying food to its young, and a female Nuthatch (doing

a good impression of a woodpecker). In the 10am walk we found lots of common butterflies, and another Raft Spider, this time in the smaller boggier heath. Also a cricket and a nest of small spiders. In the heathland we were shown a laminated snake skin and a dragon fly shell by Scott. We found a shield bug, labyrinth spiders (whose webs were easy to spot in the dew), harvestman and yellow ladybirds.

Although this was a free event



BioBlitz

many people made donations towards the playground equipment for over 8s. We raised over £60.

Photos of the BioBlitz can be seen on the website.

Full results of the BioBlitz Survey will be available at our AGM on Tuesday 20th Oct.

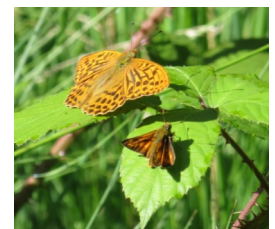


Nuthatch with young by Richard Kemp

Wildlife Photos

Do you have any great photos of the wildlife or signs of spring in the park and woods?

We would love to see them and display them on our website. If you'd like to share your sightings, please send them to website@basingbournepark.org.uk.



Silver-washed Fritillary & Skipper by Lindsay Soars

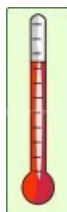
Footpath Renewal

The new footpaths through Basingbourne woods are now finished. This type of surfacing is new to Fleet. Please let us know what you think of it, so that Fleet Town Council know whether to use it in Oakley Park too.



New Paths

Equipment Appeal



Fleet Lions have made a £500 donation towards our playground equipment appeal. This will add to the £170 from the Easter Egg Hunt and £65 donations raised during the BioBlitz Weekend.



Fleet Lions Donation

Bridge Refurbishment & Climbing Frame Repaint



New Bridge Surface

The little bridge in the playground has been refurbished.

Part of the large climbing frame has been painted.

Come and look at the results.



Repainted Climbing Frame

General Enquiries:

info@basingbournepark.org.uk

Membership Enquiries:

membership@basingbournepark.org.uk

www.basingbournepark.org.uk

Did you know you can become a member of Friends of Basingbourne Park? You will be kept up to date with all the events in the park. It costs £2.50 for an individual or £5 for a family membership per year. We are a not for profit organisation. The membership fees are used to cover our modest overheads and administration costs and provide insurance cover for working parties, action days and social events.

Friends of Basingbourne Park is a not-for-profit organisation set up in 2011 by a group of local residents keen to support the regeneration of the park.

Our key areas of interest represent the wide variety of areas within the park and include improving the children's play area, reinvigorating the pavilion, and protecting and improving the environmental aspects of the park including the lowland heath areas.

We do this by liaising with the council, holding action days and social events.

We have talks about the woodland and its wildlife, removed some invasive plants from the heathland, cleared away lots of litter and painted some of the playground. There is so much more we would like to do and we welcome anyone who would like to join us.

For more information on any of these please email info@basingbournepark.org.uk

Nature Walk



Raft Spider

Tony Mundell led 16 participants on a nature walk with great enthusiasm. The younger walkers were each given a bag, and challenged to collect a leaf from as many different trees and shrubs as possible.

In the woods Tony pointed out different trees, shrubs, fungi and ferns. On the

northern heath, we were introduced to a further range of heathland plants. We also came across slow worms, lizards and a raft spider. Particularly exciting were 2 Palmate Newts, as we had not yet come across any newts during the BioBlitz or other recent surveys.

Whilst we were on the heath, Tony pointed out some of the

rarer plants on the site, and noted that most of these have significantly declined since he started participating in surveys of the site in the 70s and 80s.

In the Pavilion, the leaves were checked and counted. This confirmed that we had identified around 20 different trees and shrubs (of the 30 or so which are thought to be on the site).

Forthcoming Events

Tuesday 20th October

AGM including the BioBlitz Results

8pm at Crookham Baptist Church

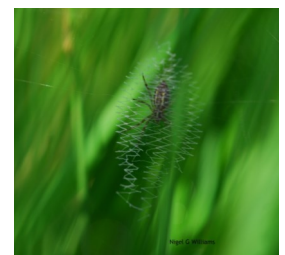
Saturday 7th November 2015

Volunteer Session

Scrub Clearance in the Boggy Heath & Litter Pick

December 2015

Christmas Social



Orb Web Spider



Butterfly Identifying